



Google Earth Basics

Search

Fly To Find Businesses Directions

Fly to e.g., Hotels near JFK

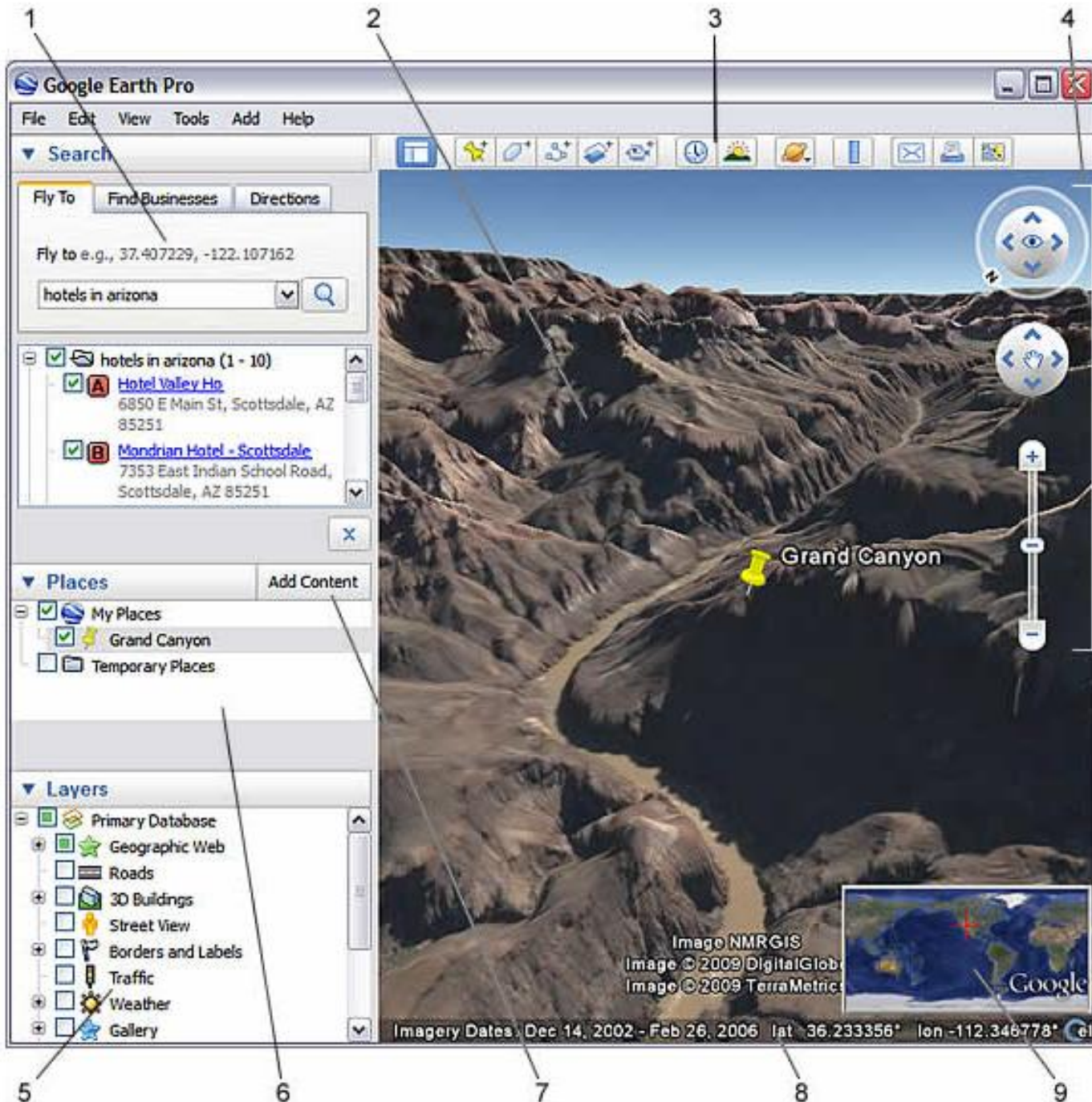
Places Add Content

- My Places
- Burlington, VT
- Bennington, VT
- Castleton State College VT (1 ...)
- Temporary Places

Layers

- Primary Database
- Geographic Web
- Roads
- 3D Buildings
- Street View
- Borders and Labels
- Traffic
- Weather
- Gallery
- Ocean
- Global Awareness
- Places of Interest
- More
- Terrain






1. **Search panel** - Use this to find places and directions and manage search results.
2. **3D Viewer** - View the globe and its terrain in this window.
3. **Toolbar buttons**
4. **Navigation controls** - Use these to zoom, look and move around
5. **Layers panel** - Use this to display points of interest.
6. **Places panel** - Use this to locate, save, organize and revisit placemarks.
7. **Add Content** - Click this to import exciting content from the KML Gallery
8. **Status bar** - View coordinate, elevation, imagery date and streaming status here.
9. **Overview map** - Use this for an additional perspective of the Earth.

Google Earth Toolbar



 Conceal or the display the side bar

 Add a [placemark for a location](#)

 Add a [polygon](#)

 Add a [path \(line or lines\)](#)

 Add an [image overlay on the Earth](#)

 [Record a tour](#)

 [Display historical imagery](#)

 [Display sunlight](#) across the landscape

 [View the sky, moon and planets](#)

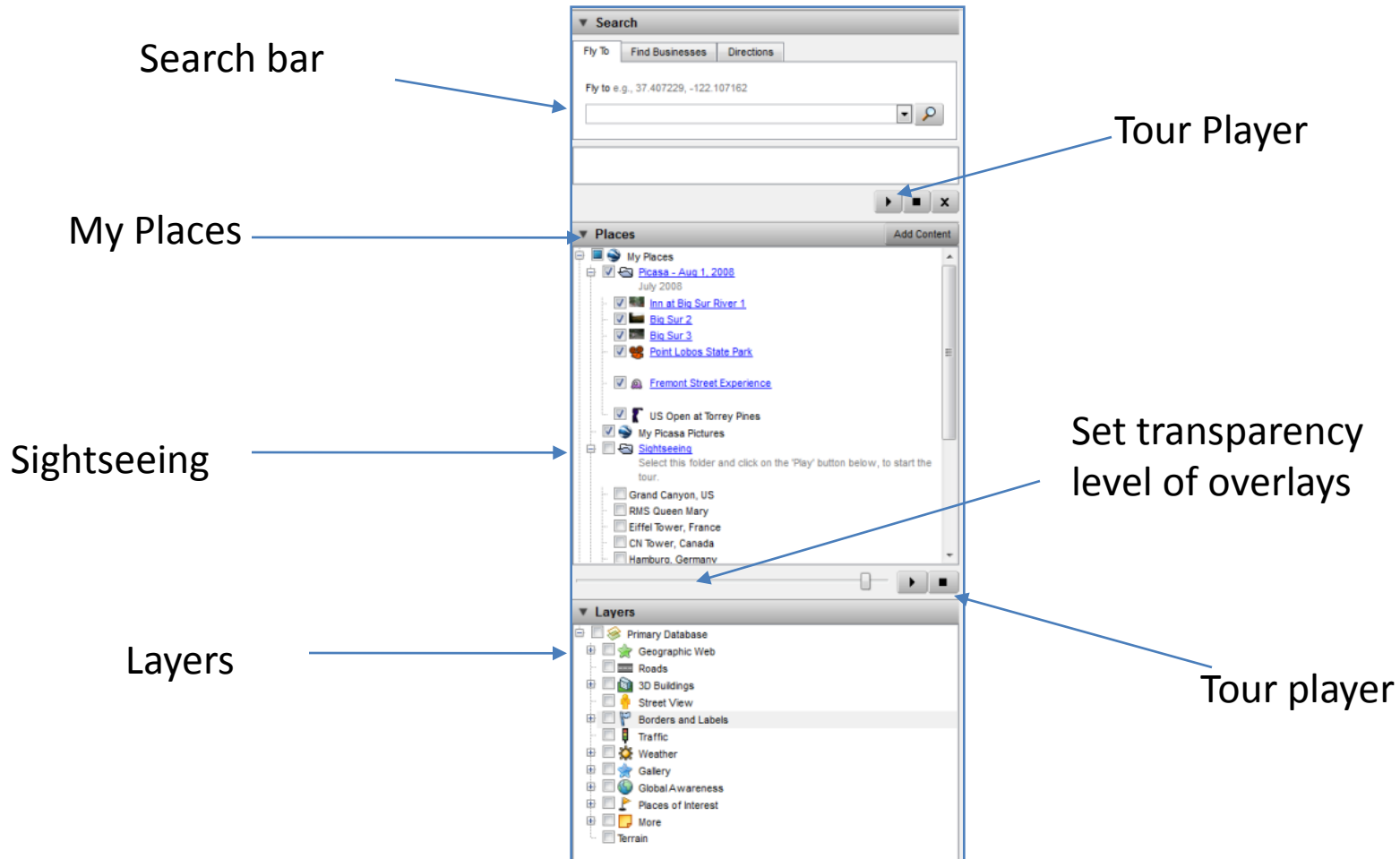
 [Measure a distance or area size](#)

 Email a [view](#) or [image](#).

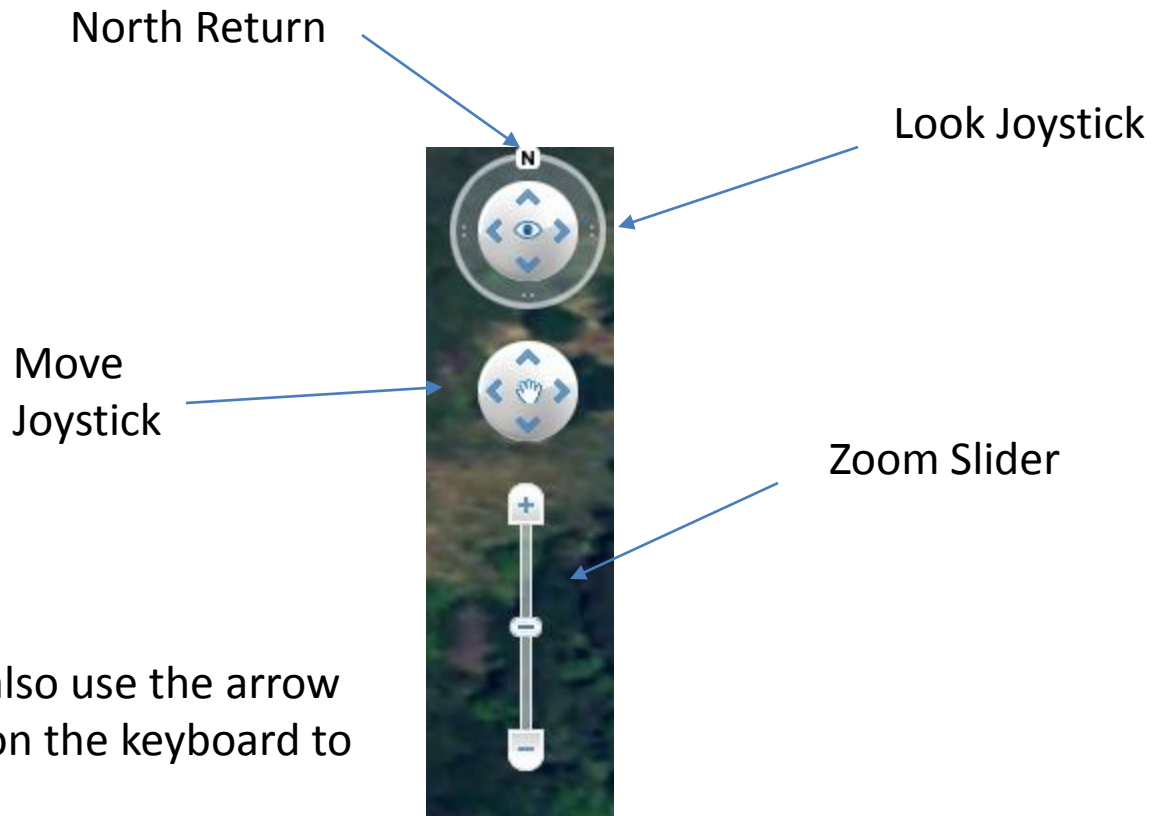
 Print the current view of the Earth

 Show the current view in Google Maps

The Google Sidebar



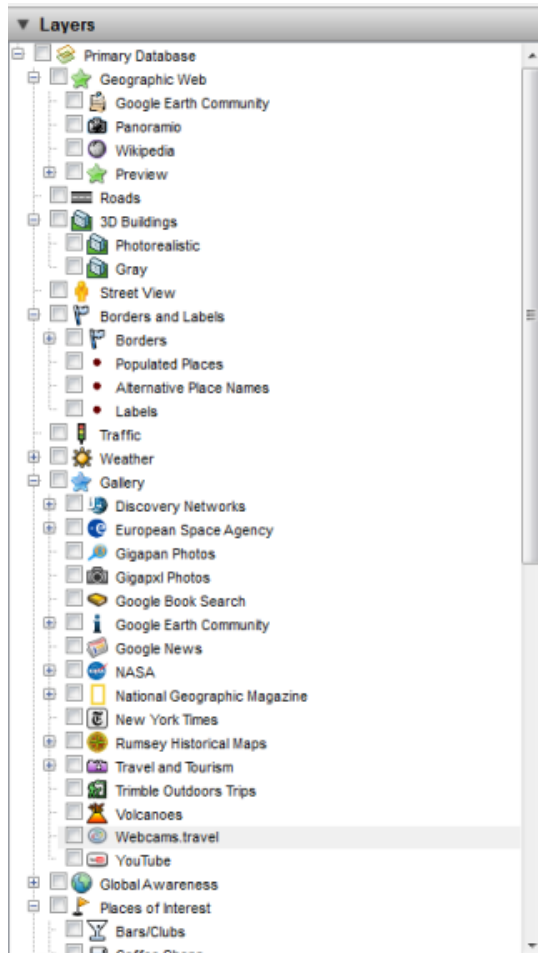
Navigating Google Earth



You can also use the arrow buttons on the keyboard to navigate


[Watch video of navigating in Google Earth](#)

Layers in Sidebar



- Use the Layer feature in Google only when necessary. Each layer added to Google Earth will add rendering time each time the map is moved and redrawn.
- Especially taxing, yet very cool, is the use of the 3D layer.
- Often the layers can be extremely useful teaching resource, such as the geographic options.

Exploring Google Earth

- In order to save locations you will need to move folders under “My Places” and save.
- A plus sign + indicates there are sub menus under the “sightseeing” heading.
- To access one of the locations, double click on the location.
- To move through the folder full of of locations, click on the ►. 
- To view a location or placemark in detail, double click on the link, in the left sidebar.